

Table of contents

The Colorado Report	1
Users	3
Last Login	3
Content	4
Deployed by language	4
App Mode	5
Language	6
Type	7

The Colorado Report

A monthly review of the state of Colorado.

💡 Expand to see setup code

```
library(connectapi)
library(ggplot2)
library(dplyr)
library(janitor)
library(lubridate)
library(stringr)
library(scales)
library(forcats)
library(glue)
```

```
colour_mapping_lang <- c(
  "Python" = "#FFD43B",
  "R" = "#276BBE",
  "Quarto" = "#75AADB",
  "Unknown" = "#C4C7C9"
)
```

```
colour_mapping_type <- c(
  "Document" = "#447099",
  "Web App" = "#72994E",
  "API" = "#EE6331",
  "Unknown" = "#C4C7C9"
)
```

```
client <- connect()
content <- get_content(client)
```

```
content <- content |>
# Classify content
mutate(
  language = case_when(
    !is.na(r_version) ~ "R",
    !is.na(py_version) ~ "Python",
    !is.na(quarto_version) ~ "Quarto",
    TRUE ~ "Unknown"
  ),
  app_type = case_when(
    str_ends(app_mode, "static") ~ "Document",
    str_ends(app_mode, "api") ~ "API",
    str_ends(app_mode, "shiny") ~ "Web App",
    str_ends(app_mode, "streamlit") ~ "Web App",
    str_ends(app_mode, "bokeh") ~ "Web App",
    str_ends(app_mode, "dash") ~ "Web App",
    TRUE ~ "Unknown"
  )
)
```

```
licensed_users <- client |>
  get_users(page_size = 50, limit = 99999) |>
  filter(locked == FALSE)
mutate(
  summarise(
    # Count of users by language
    languages = list("Unknown", "Quarto", "Python", "R"),
    mutate(
      list(
        forcats::fct_lump_n(
          languages,
          n = 10000,
          smallest = TRUE,
          labels = "Other"
        )
      )
    )
  )
)
```

Users

Colorado has 341 licensed users. Of those 341 users, 48 have not logged in for a year.

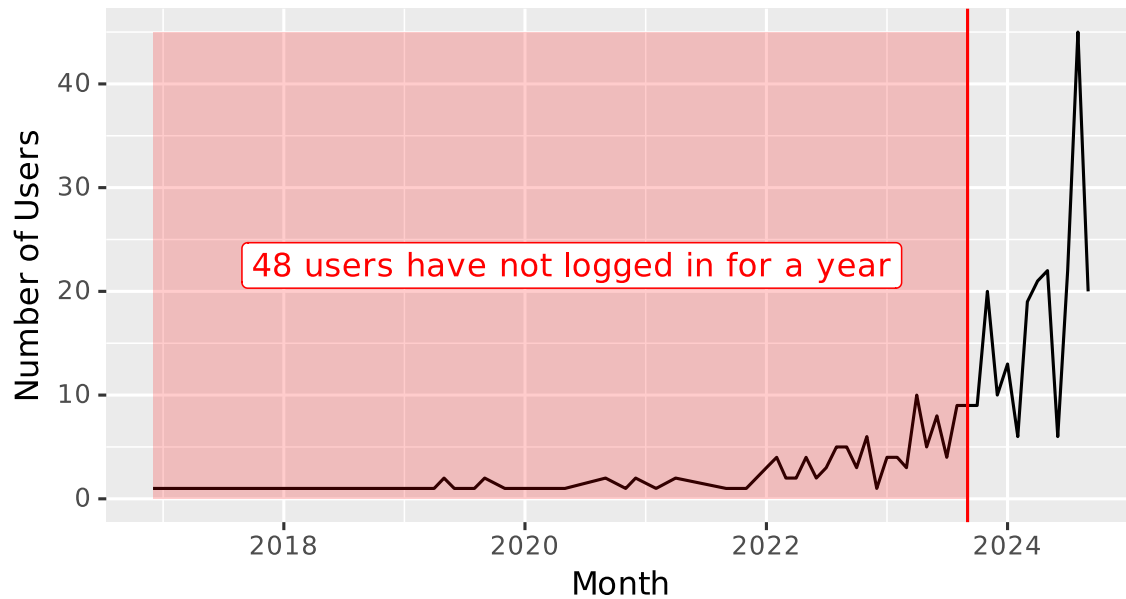
Last Login

```
usage_plot <- summary_of_last_login |>
  ggplot(aes(x = last_active_month, y = count)) +
  geom_line() +
  geom_vline(xintercept = last_year, color="red") +
  annotate(
    "rect",
    xmin=min(summary_of_last_login$last_active_month),
    xmax=last_year,
    ymin=0,
    ymax=max(summary_of_last_login$count),
    alpha=.2,
    fill='red'
  ) +
  annotate(
    "label",
    x =last_year,
    hjust=1.1,
    y=max(summary_of_last_login$count) / 2,
    label=glue("{num_not_logged_in_1_year} users have not logged in for a year"),
    color="red"
  ) +
  labs(
    title = "Last Login",
    subtitle = "Count of users by last login (licensed users only).",
    x = "Month",
    y = "Number of Users",
  )

usage_plot
```

Last Login

Count of users by last login (licensed users only).



Content

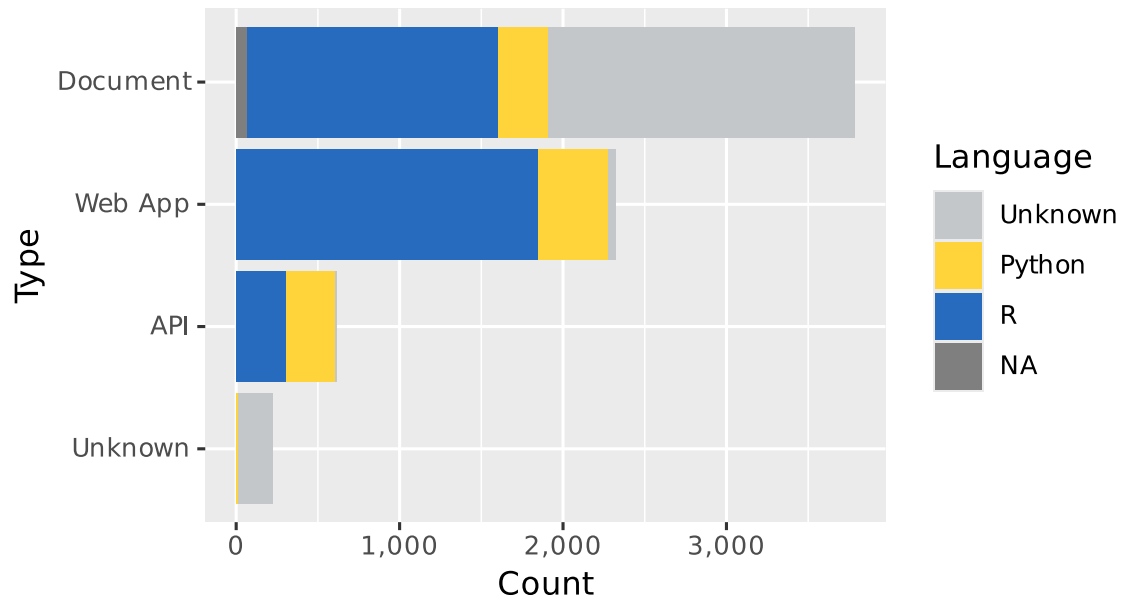
Colorado has **6,946** items deployed.

Deployed by language

```
deployed_by_language <- content |>
  group_by(language, app_type) |>
  summarise(n = n(), .groups = "drop") |>
  ggplot(aes(x = app_type, y = n)) +
  geom_col(aes(fill = language)) +
  scale_fill_manual(values = colour_mapping_lang) +
  scale_y_continuous(label=comma) +
  labs(
    title = "Distribution of Content Deployed on Colorado",
    subtitle = "By Language and Type",
    x = "Type",
    y = "Count",
    fill = "Language"
  ) +
  coord_flip()

deployed_by_language
```

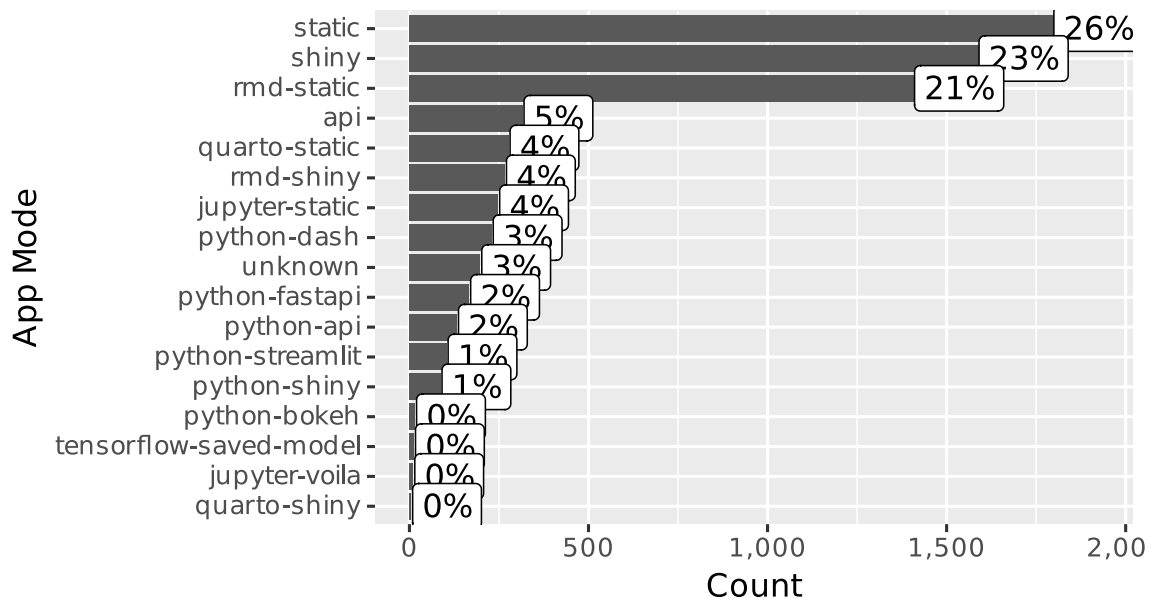
Distribution of Content Deployed on Colorado By Language and Type



App Mode

```
content |>
  tabyl(app_mode) |>
  arrange(desc(n)) |>
  mutate(app_mode = fct_reorder(factor(app_mode), n)) |>
  ggplot(aes(x = app_mode, y = n)) +
  geom_col() +
  geom_label(aes(label = percent(percent, accuracy = 1)), nudge_y = 100) +
  scale_y_continuous(label=comma) +
  labs(
    title = "Distribution of Content Deployed on Colorado",
    subtitle = "By App Mode",
    x = "App Mode",
    y = "Count"
  ) +
  coord_flip()
```

Distribution of Content Deployed on Colo By App Mode



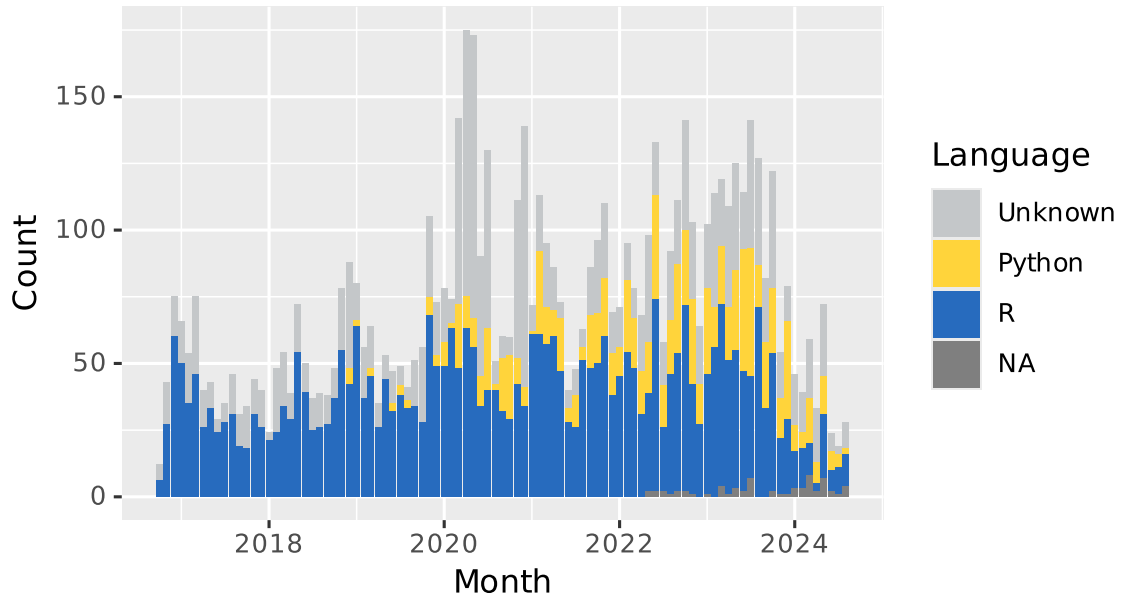
We can see how the type of content deployed changes over time.

Language

```
content |>
  mutate(create_year_month = floor_date(created_time, unit = "month")) |>
  group_by(language, create_year_month) |>
  summarise(count = n(), .groups = "drop") |>
  ggplot(aes(x = create_year_month, y = count)) +
  geom_col(aes(fill = language)) +
  scale_fill_manual(values = colour_mapping_lang) +
  scale_y_continuous(label=comma) +
  labs(
    title = "Content Creation Over Time",
    subtitle = "By language",
    x = "Month",
    y = "Count",
    fill = "Language"
  )
```

Content Creation Over Time

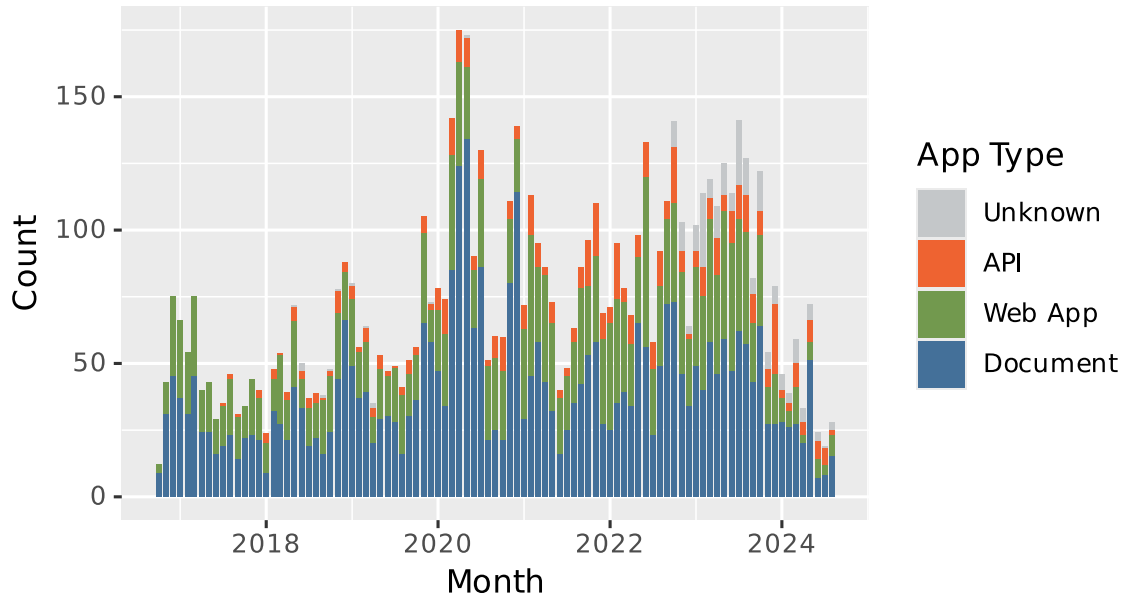
By language



Type

```
content |>
  mutate(create_year_month = floor_date(created_time, unit = "month")) |>
  group_by(app_type, create_year_month) |>
  summarise(count = n(), .groups = "drop") |>
  ggplot(aes(x = create_year_month, y = count)) +
  geom_col(aes(fill = app_type)) +
  scale_fill_manual(values = colour_mapping_type) +
  scale_y_continuous(label=comma) +
  labs(
    title = "Content Creation Over Time",
    subtitle = "By app type",
    x = "Month",
    y = "Count",
    fill = "App Type"
  )
```

Content Creation Over Time By app type



Colorado Report Update for 2024-09-01

Hello Colorado user,

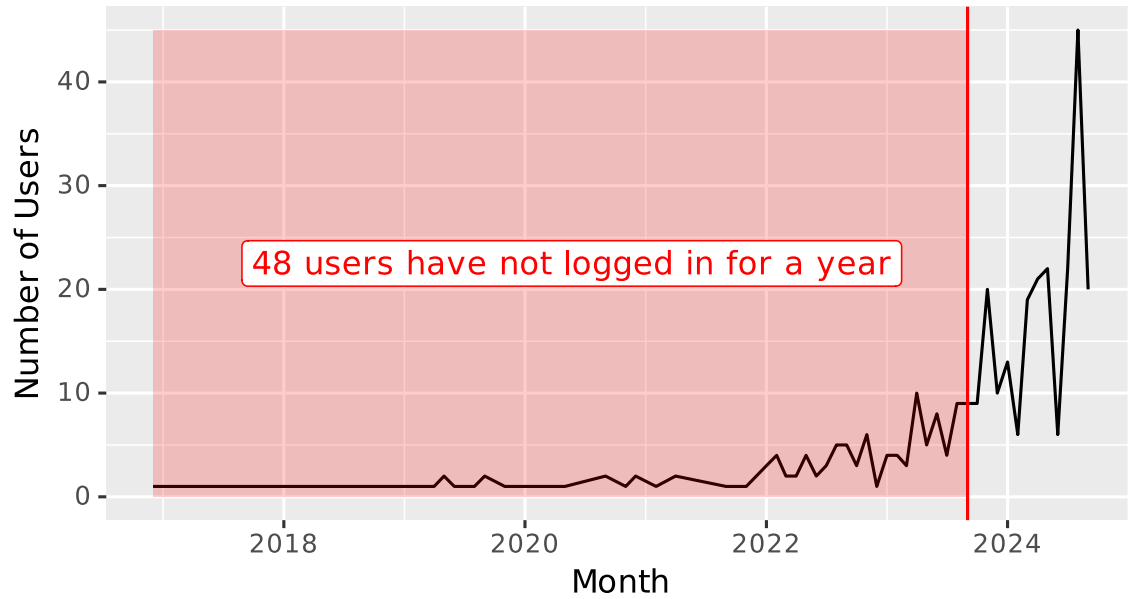
Below is a summary of the key metrics for Colorado as of 2024-09-01. To see the complete report or access prior versions please visit: <https://colorado.posit.co/rsc/connect/#/apps/205b9011-a965-4f34-8f8f-3c12354833bd>.

Users

Colorado has **341** licensed users. Of those 341 users, **48** have not logged in for a year.

Last Login

Count of users by last login (licensed users only).



Content

Colorado has 6,946 items deployed.

Distribution of Content Deployed on Colorado By Language and Type

